

# RACK ACCESSORIES



**Flat Shelves** pg 72

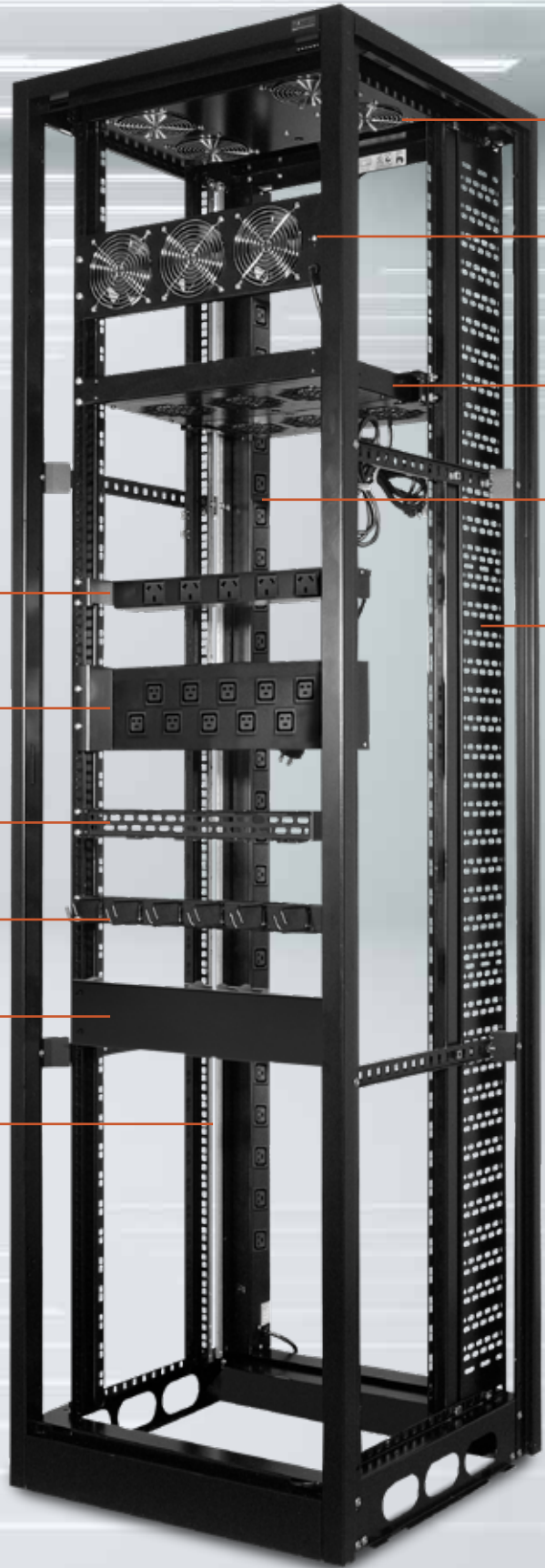
**Telescopic Shelf**  
pg 73

**Telescopic Drawer**  
pg 74

**Telescopic Shelf  
with Pivot Plate** pg 73

**Telescopic  
Writing Desk** pg 74

**Cantilever Shelves**  
pg 72



**Roof Fan Tray** pg 80

**19" Fan Panel** pg 81

**1RU Fixed Fan Tray**  
pg 81

**Vertical Power  
Distribution Board**  
pg 78

**Vertical Cable Tray**  
pg 76

**Horizontal Power  
Distribution Board**  
pg 78

**Hi-Density Horizontal  
Power Distribution Board**  
pg 78

**Horizontal Wire  
Management Tray**  
pg 75

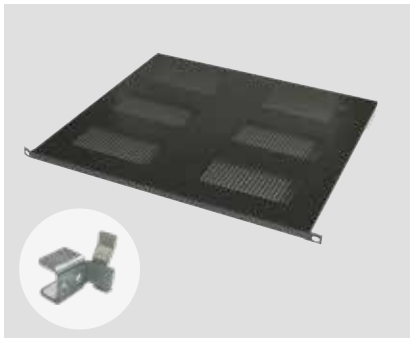
**1RU Cable Retaining  
Hoop Panel**  
pg 75

**Horizontal  
Cable Duct**  
pg 77

**Earth Bar**  
pg 75

## FLAT SHELVES

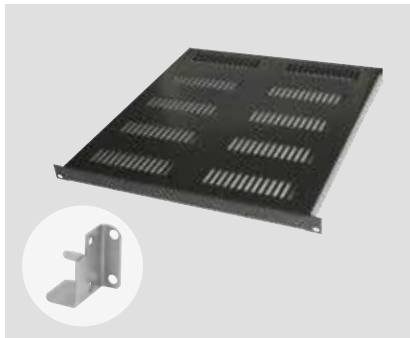
Designed to suit MFB's cabinet range, these shelves are vented and finished in black powder coat. Various depths are available and can be mounted with our easy tool less mounting system.



### STANDARD

This shelf can carry loads up to 50kg evenly distributed.

DEPTH	19"
300	<b>03010-01</b>
400	<b>03010-02</b>
500	<b>03010-04</b>
600	<b>03010-06</b>
700	<b>03010-09</b>



### HEAVY DUTY

Heavy duty shelves are 30mm in height and can carry loads of up to 200kg evenly distributed. (heavier loads upon request)

DEPTH	19"
300	<b>03051-01</b>
400	<b>03051-02</b>
500	<b>03051-04</b>
600	<b>03051-06</b>
700	<b>03051-08</b>
800	<b>03051-40</b>
900	<b>03051-58</b>



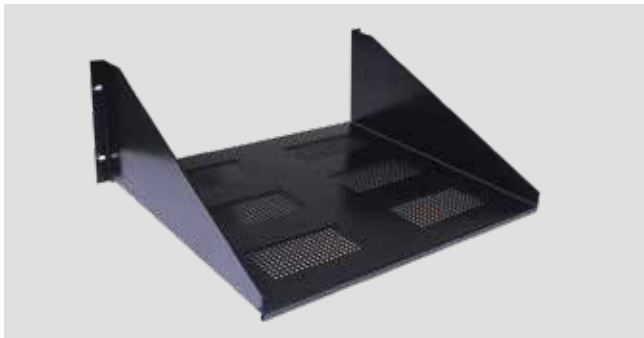
### TOOL FREE MOUNTING

All standard flat shelves take advantage of the tool free mounting, providing a much simpler and faster installation.

Designed for use with either the type A or C mounting angles.

## CANTILEVER SHELVES

These shelves are designed for front mounting only and are vented and finished in black powder coat. Various depths are available and can be mounted easily with tool free mounting.



### THREE-PIECE

Constructed in three parts (2 side plates and a flat shelf that lock together). These Tray Sides may be paired with all size standard flat shelves, the depth dimensions shown are the suggested minimum shelf depth for each tray side. Deeper shelves may be paired to smaller sides. Sides and Base are ordered separately.

SIZE	BASE PLATES	SIZE	SIDE PLATES
300	<b>03010-01</b>	2RU	<b>02727-01</b>
400	<b>03010-02</b>	3RU	<b>02727-02</b>
500	<b>03010-04</b>	4RU	<b>02727-03</b>
600	<b>03010-06</b>	5RU	<b>02727-04</b>



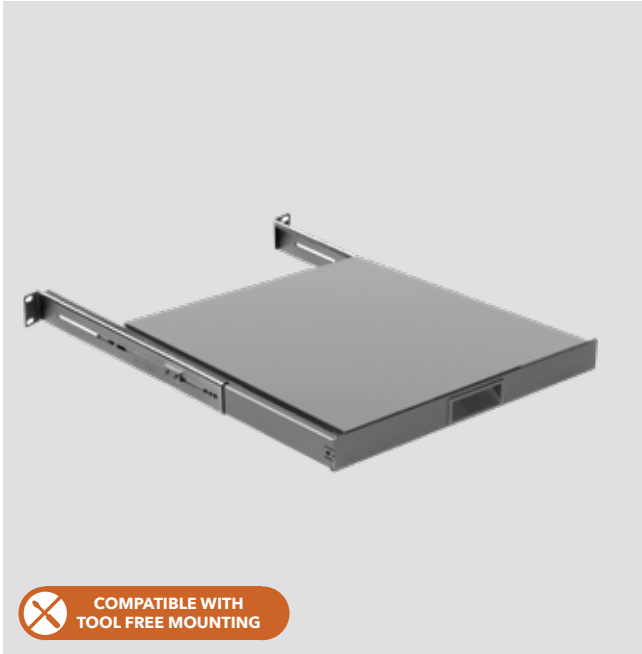
### ONE-PIECE

Designed to suit all 19" rack enclosures and open frames, the one piece shelf is suited for small, lightweight equipment. The shelf is fully vented & comes with all fixing hardware.

SIZE (ONE PIECE)	LOAD CAPACITY	19"
1RU x 200mm	6kg *Evenly Distributed	<b>12068-50</b>
2RU x 250mm	30kg	<b>12068-46</b>

## TELESCOPIC SHELVES

These shelves are compatible with rack studs and tool free mounting.



 COMPATIBLE WITH TOOL FREE MOUNTING



 COMPATIBLE WITH TOOL FREE MOUNTING

### STANDARD

Designed to allow non 19" mounting equipment to be housed in a rack. Slides allow for complete depth of shelf to be slid out. All sizes take 45kg load evenly distributed.

DEPTH	19" CODE
350	03048-01
450	03048-03

### WITH PIVOT PLATE

Allows for a standard width keyboard to be used in a 19" rack. The keyboard is placed on the pivot plate and when the shelf is withdrawn the keyboard can be pivoted around, also allowing space for a mouse at the rear.

DEPTH	19" CODE
450	03071-01

Telescopic items have provision for mounting Hinged Cable Carrier. MFB use "Accuride®" slides on all telescopic mounting accessories, they were chosen by MFB for their smooth action under heavy loads, superior features and extreme durability.

## TELESCOPIC DRAWERS & SLIDES

Standard sizes available, 2RU + 3RU (except Writing Desk). Available in 350 and 450 deep.



COMPATIBLE WITH TOOL FREE MOUNTING



COMPATIBLE WITH TOOL FREE MOUNTING



COMPATIBLE WITH TOOL FREE MOUNTING

### STANDARD

Fitted with a central pull out handle. Complete depth of drawer can be pulled out from rack.

HEIGHT	DEPTH	CODE
2RU	350	<b>03050-01</b>
	450	<b>03050-05</b>
3RU	350	<b>03050-03</b>
	450	<b>03050-06</b>

### LOCKABLE

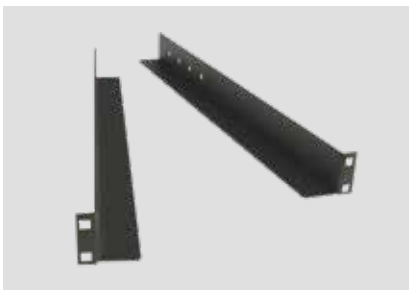
All drawer units can be optioned with a key lock, when mounted beneath a piece of equipment or a shelf for instance, this option provides a moderate level of security for the drawer contents.

HEIGHT	DEPTH	CODE
2RU	350	<b>03050-13</b>
	450	<b>03050-23</b>
3RU	350	<b>03050-24</b>
	450	<b>03050-25</b>

### WRITING DESK

Complete with a laminated writing surface and a storage tray underneath. Like the shelf, it occupies 1RU. The writing surface is hinged along its rear edge and opens to provide a storage tray.

DEPTH	19" CODE
350	<b>03049-01</b>
450	<b>03049-03</b>



### FIXED EQUIPMENT SLIDES

Designed to mount using either Type A or Type C mounting angles, these Fixed Equipment Slides have an adjustable rear mounting bracket, providing adjustability for vertical mounting angles, equipment and slides. The slides can be mounted into all cabinets, they are powder coated in Sable Black. All slides have a load rating of 50kg.

DEPTH	CODE (PER PAIR)
300	<b>03058-01</b>
400	<b>03058-02</b>
500	<b>03058-03</b>
600	<b>03058-04</b>
700	<b>03058-05</b>
800	<b>03058-06</b>



### TELESCOPIC EXTENSION KITS

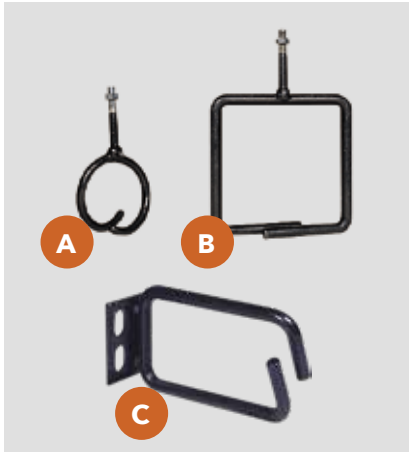
Telescopic Extending Rear Brackets are used when mounting rails are set at extended distances. Generally used in deeper frames they provide flexibility when positioning accessories in the rack when items of different depths are used. A rear short or long telescopic extension kit must be ordered separately, depending on the distance between the front & rear mounting angles within the rack.

SLIDE LENGTH	SHORT BRACKETS		LONG BRACKETS	
	MIN	MAX	MIN	MAX
350	335	520	635	820
450	335	650	635	950

TYPE	CODE
Short Extension	<b>03008-03</b>
Long Extension	<b>03008-04</b>

## CABLE MANAGEMENT

MFB manufacture a large range of cable management solutions to suit every situation. MFB can also custom make cable management products to your specific needs.



### LACING RINGS

Positioned at any available hole, cables are bunched and tied together. Rings provide support at the point where cables branch off to equipment.

SIZE	CODE
A 50mm Round	<b>03032-01</b>
B 100mm Square	<b>03032-02</b>
C 1RU Rectangle	<b>03032-04</b>
Recessed Rings (to suit Class C)	<b>03032-12</b>
Recessed Rings (to suit S280)	<b>03032-13</b>



### LACING BARS

Lacing Bars provide additional cable support and can be used at any location within the rack.

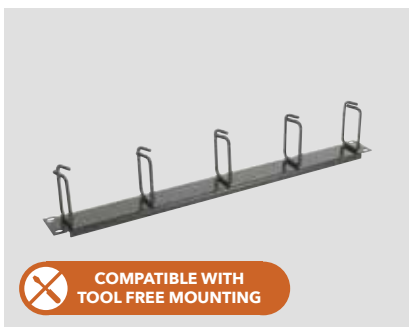
VERTICAL		HORIZONTAL	
RU	CODE	WIDTH	CODE
12	<b>12063-05</b>	19"	<b>12150-01</b>
18	<b>12063-04</b>		
24	<b>12063-06</b>		
27	<b>12063-01</b>		
33	<b>12063-07</b>		
39	<b>12063-02</b>		
42	<b>12063-08</b>		
45	<b>12063-03</b>		



### EARTH BAR

The copper earth bar mounts vertically in the racks and comes with M6 tapped holes at 100mm pitch. Also available is an optional Insulation bush. Tin plated copper 3mm x 20mm.

TYPE	CODE
12	<b>12064-04</b>
18	<b>12064-05</b>
24	<b>12064-06</b>
27	<b>12064-01</b>
33	<b>12064-07</b>
39	<b>12064-02</b>
42	<b>12064-08</b>
45	<b>12064-03</b>
Earth Bar Insulation Bush Assembly	<b>03313-01</b>



**COMPATIBLE WITH TOOL FREE MOUNTING**

### CABLE RETAINING HOOP PANEL

Fitted with 5 hoops that feature open ends. It is designed to fit across the 19" racking to provide a sturdy support for cables. Finished in black powder coat.

RU	19" CODE
1	<b>02100-01</b>
2	<b>02100-07</b>



**COMPATIBLE WITH TOOL FREE MOUNTING**

### HORIZONTAL WIRE MANAGEMENT TRAY

This 1RU tray is designed to provide cable support and distribution for use with patch panels etc. Finished in black powder coat.

WIDTH	CODE
19"	<b>12527-01</b>



### HINGED CABLE CARRIER

Designed to mount to the rear of telescopic equipment and provide a support for cables when being moved in and out.

CODE
<b>03022-01</b>

# CABLE MANAGEMENT



## CABLE TRAYS

Providing a traceable wire management system which is designed to provide a more simplified installation. The locating tab at the bottom of the tray offers simple positioning along the base frame teamed up with push in snap rivets which fasten the cable tray onto the frame. The design allows the use of Velcro and cable ties. All designs suit toolless mounting with no cage nuts or screws required. Designed with a safety edge for cabling, also providing the ability to interlock additional cable trays, creating a wider space for cabling.

VERTICAL			HORIZONTAL		
RU	WIDTH	CODE	WIDTH	RU	CODE
12	100	<b>02069-01</b>	19"	2	<b>12157-01</b>
	150	<b>02069-09</b>		3	<b>12157-02</b>
18	100	<b>02069-02</b>			
	150	<b>02069-10</b>			
24	100	<b>02069-03</b>			
	150	<b>02069-11</b>			
27	100	<b>02069-04</b>			
	150	<b>02069-12</b>			
33	100	<b>02069-05</b>			
	150	<b>02069-13</b>			
39	100	<b>02069-06</b>			
	150	<b>02069-14</b>			
42	100	<b>02069-07</b>			
	150	<b>02069-15</b>			
45	100	<b>02069-08</b>			
	150	<b>02069-16</b>			



## VERTICAL CABLE DUCTING FOR CHANNEL RACKS

Vertical cable ducting can be fitted to both front and rear of the steel channel rack- providing excellent cable management for patching applications. Cable duct kits can be fitted with an added feature of baying them together to create a suite of racks.

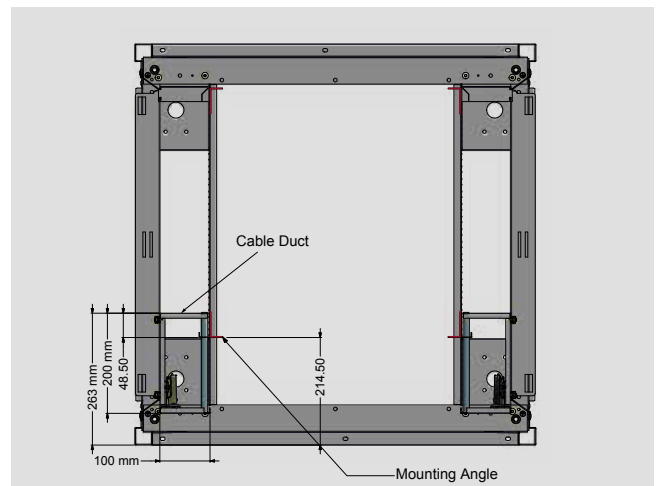
To assist with providing a neat cable management system, all ducts are fitted with a single full height door with a concealed soft closing hinge. All kits are fitted with 12mm diameter metal support fingers and feature cable entry holes down the sides of the chassis to allow for cabling.

## VERTICAL CABLE DUCTING FOR REDUCER CABINETS

The cable duct kits can be fitted down both sides of any 800mm wide cabinet, or down one side of a 700mm wide cabinet while still maintaining 19" racking. Installation into the rack has been made easy and quick 4-point fixing.

The 100mm Wide x 200 mm deep duct kit, can be fitted to both the front and rear of a cabinet. See below plan view drawing to establish which depth rack will suit your application.

RU	CODE
18	<b>03311-07</b>
27	<b>03311-05</b>
33	<b>03311-11</b>
39	<b>03311-03</b>
42	<b>03311-09</b>
45	<b>03311-01</b>



Cable duct fitted to cabinet at front with mounting angle

Got a really big job?  
Talk to MFB about their S100 High Density Open Patching Frame and 300w ducting options.

## CABLE MANAGEMENT



### PVC CABLE DUCTING

Cables are retained inside ducting by snap on cover and exit from ducting through the slots provided. Ducting size 80mm wide x 60mm deep. Made of PVC.

RU	CODE
12	<b>12308-20</b>
18	<b>12308-21</b>
24	<b>12308-22</b>
27	<b>12308-23</b>
33	<b>12308-24</b>
39	<b>12308-25</b>
42	<b>12308-26</b>
45	<b>12308-27</b>



### HORIZONTAL CABLE DUCTS

2RU Horizontal Cable ducts may be used to bridge cables across racks, these ducts feature finger openings that come with plastic cable protectors to guide the cables smoothly without the risk of sharp bends occurring. These fingers run along both sides of the duct. The unit is also fitted with a cover. Constructed in steel and come with a black powder coat finish.

WIDTH	CODE
19"	<b>03312-01</b>



### ROOF CABLE DUCT

This 2 stage fully adjustable cable duct extends from 450mm to 850mm. The addition of a third section extends it up to a further 400mm. Mounts directly onto the roof gland plate opening. Both sections are in two parts allowing the duct to be assembled around existing cabling. Powder coat finish in customer choice of colour. Suits all cabinets with top gland plate including wall mount cabinets.

**Note: The third section is the lower section mounted upside down.**

TYPE	CODE
Complete Assembly	<b>03065-08</b>
Lower Section Only	<b>03065-09</b>



### OVERHEAD CABLE DUCT SYSTEM

Designed to accommodate a large number of cables across a suite of S2005 cabinets. The 200mm wide duct sits above the roof panel and provides a "drop in" feature, which allows cables to enter the cabinet in the correct position. The rail kit offers the flexibility to mount the duct at any position throughout the depth of the rack. This also provides the ability to add additional ducts for extra width. Both the 700 wide and 800 wide have the "drop in" feature. Assembly is easy with all required fixing points already on the rack, simply screw in the rails kits and fix on the duct sections.

SUPPORT RAIL KIT		CABLE DUCT	
SUITS DEPTH	CODE	SUITS WIDTH	CODE
600	<b>03065-15</b>	600	<b>03065-10</b>
700	<b>03065-16</b>	700	<b>03065-11</b>
800	<b>03065-17</b>	800	<b>03065-12</b>
900	<b>03065-18</b>		
1000	<b>03065-19</b>		



### CABLE GLAND EDGE PROTECTOR

This easy to apply protector can be cut to length and grips to the edge of the steel for superior protection of cables. Edge protector can be used on any cable cut out no matter the shape or size.

*Note: To suit standard 200 x 75 cable gland opening.*

LENGTH	CODE
500mm	<b>37110-54</b>



## POWER DISTRIBUTION BOARDS

All of MFB's Power Distribution Boards for the Australian market are manufactured in compliance with AS/NZS 3000:2018



### HORIZONTAL - 19"

Available in 1RU 6 outlet, and 2RU 10 outlet, they are designed to mount across the 19" racking. And all boards are supplied fully wired, fitted with circuit breaker, and a 2.5m lead. Global outlets and sockets are also available, including US, UK and Singapore. MFB can also supply solutions for custom power distribution, our sales and design team will work with you to provide a product that will perfectly suit your needs.

OUTLET TYPE	PLUG TYPE	1RU 6 OUTLET RECESSED	2RU 10 OUTLET RECESSED
10A Australian	10A Australian	<b>93500-01</b>	<b>93500-40</b>
Australian	10A IEC	<b>93500-27</b>	<b>93500-41</b>
Australian	10A Screw Lock Plug	<b>93500-30</b>	<b>93500-42</b>
10A Australian	15A Screw Lock Plug	<b>93500-28</b>	<b>93500-43</b>
10A IEC	10A IEC	<b>93500-14</b>	<b>93500-44</b>
15A IEC	15A IEC	<b>93500-15</b>	<b>93500-45</b>

Whilst the part numbers for the 19" versions are listed, boards to suit 800 wide, 700 wide and non recessed mount are also available by using MFB approved adaptor panels.



### GLOBAL OUTLETS

Whilst we stock the Australian type outlets. Configurations for the world market are available upon request. These include US, UK, IEC and Singapore sockets.



### VERTICAL POWER DISTRIBUTION BOARD

The vertical power boards are available in 4 different lengths and are designed for quick mounting to any cabinet. The boards are fully wired, fitted with circuit breaker, and a 2.5m lead.

Global outlets and sockets are also available.

HEIGHT	OUTLET	AUS OUTLETS	CIRCUIT BREAKER	PLUG	STD PLUG	SCREW LOCK PLUG
18RU	6	10A	10A	10A	<b>93500-02</b>	<b>03203-60</b>
		15A	15A	15A	<b>93500-152</b>	<b>93500-156</b>
		20A	20A	20A	<b>03202-40</b>	<b>03209-60</b>
		10A	15A	15A	-	<b>93500-160</b>
		10A	20A	20A	-	<b>93500-164</b>
27RU	12	10A	10A	10A	<b>93500-03</b>	<b>03203-62</b>
		15A	15A	15A	<b>93500-153</b>	<b>93500-157</b>
		20A	20A	20A	<b>03202-41</b>	<b>03209-61</b>
		10A	15A	15A	-	<b>93500-161</b>
		10A	20A	20A	-	<b>93500-165</b>
39RU	18	10A	10A	10A	<b>93500-04</b>	<b>03203-63</b>
		15A	15A	15A	<b>93500-154</b>	<b>93500-158</b>
		20A	20A	20A	<b>03202-42</b>	<b>03209-62</b>
		10A	15A	15A	-	<b>93500-162</b>
		10A	20A	20A	-	<b>93500-166</b>
45RU	24	10A	10A	10A	<b>93500-05</b>	<b>03203-64</b>
		15A	15A	15A	<b>93500-155</b>	<b>93500-159</b>
		20A	20A	20A	<b>03202-43</b>	<b>03209-63</b>
		10A	15A	15A	-	<b>93500-163</b>
		10A	20A	20A	-	<b>93500-167</b>

### Power Board Customization

MFB are able to offer a large range of configurations. From IEC, Screw Lock Plugs, and Dual Polarity to Multiple Circuits, Individually Switched and every different socket and plug combination you can think of.

## POWER DISTRIBUTION BOARDS



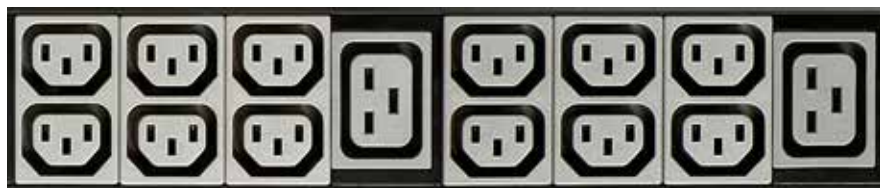
### SENTINEL MONITORED POWER DISTRIBUTION

The Sentinel Power Boards provide reliable power distribution combined with local and remote power management with environmental monitoring via IP.

Available with either Australian, IEC C13, IEC C19, IEC C13 Locking and IEC C19 locking, these power boards have the ability to view power, temperature and humidity levels via a web browser or receive SNMP based alarms when conditions exceed defined thresholds. User defined outlet control access can be managed by the administrator with the ability to reboot attached appliances in a controlled timed sequence.

The modular format on all outlet types in blocks of 8 to 16 outlets per module allows for standard & high density configurations. Single phase inputs and three phase inputs are available.

Information on total amp draw, humidity and temperature are also displayed directly on the power board, together with warning displays for an out of threshold situation.



10 amp IEC outlets tested & approved - IEC60320



A modular construction guarantees a perfectly customizable solution including standard and high density configurations that best suit your needs



The circuit breaker is of UL489 standards. It has been designed for worldwide data centre compatibility.

## AIR MANAGEMENT

MFB recognises the importance of maintaining effective airflow within cabinets, and for this reason MFB have an extensive range of products that best suits your needs.



 COMPATIBLE WITH TOOL FREE MOUNTING

### ROOF FAN TRAY

Designed to suit S2005, S210, S400 Type A cabinets, the fan unit mounts within the top frame of the cabinet and does not take up any of the racking area. The unit can be optioned with speed controller or adjustable thermostat. To allow for cabling the unit can be moved forward or to the rear of the cabinet allowing for free cabling space through the roof panel.

NO. OF FANS	OPTIONS INCLUDED	CODE
2	-	<b>06008-01</b>
	THERMOSTAT	<b>06008-20</b>
	SPEED CONTROLLER	<b>06008-40</b>
	THERMOSTAT & SPEED CONTROLLER	<b>06008-45</b>
4	-	<b>06008-02</b>
	THERMOSTAT	<b>06008-21</b>
	SPEED CONTROLLER	<b>06008-41</b>
	THERMOSTAT & SPEED CONTROLLER	<b>06008-46</b>
6	-	<b>06008-03</b>
	THERMOSTAT	<b>06008-22</b>
	SPEED CONTROLLER	<b>06008-42</b>
	THERMOSTAT & SPEED CONTROLLER	<b>06008-47</b>

### 1RU AIR FLOW DIVERTER

This unit overcomes the problem of air progressively heating as it passes through a rack full of equipment. Primarily developed for use with stacks of card frames (Eurocard etc) these units are interspaced between each device. The unit works by drawing cool air in below a card frame or piece of equipment which draws air in from the front of the rack and directs it up through the equipment, the heat baffle unit above then draws the air out of the top of the card frame and exhausts it out to the back of the rack. All sizes suit 19" equipment. All fans are 48v DC, and come with a 230v power pack. Custom sizes are also available.

STOCK DEPTH	CODE
300	<b>03034-10</b>
350	<b>03034-11</b>
400	<b>03034-12</b>

## AIR MANAGEMENT



**COMPATIBLE WITH TOOL FREE MOUNTING**

### 1RU FIXED FAN TRAY

The unit fixes directly to the vertical mounting angles, comes standard with a illuminated switch, and can be optioned with speed controller and an adjustable thermostat. Optional rear support brackets are also available. The 6 fan version comes standard with rear support brackets.

NO. OF FANS	DEPTH (MM)	OPTIONS INCLUDED	CODE
3	250	-	<b>03003-06</b>
		THERMOSTAT	<b>03003-23</b>
		SPEED CONTROLLER	<b>03003-54</b>
6	450	-	<b>03003-08</b>
		THERMOSTAT	<b>03003-21</b>
		SPEED CONTROLLER	<b>03003-58</b>

REAR BRACKET KIT	CODE
SHORT	<b>03008-01</b>
LONG	<b>03008-02</b>

Short Bracket to fit 3 Fans (325-495mm) / 6 Fans (325-710mm)  
 Long Bracket to fit 3 Fans (630-800mm) / 6 Fans (630-1010mm)



**COMPATIBLE WITH TOOL FREE MOUNTING**

### RACK MOUNT FAN PANEL

The 3RU fan panels are punched to accept either 2 or 3 x 120mm Muffin type fans. The 6RU is punched to accept 4 fans. Fully wired.

TYPE	19"	650	700	800
3RU X 3 FANS	<b>03003-01</b>	<b>03004-01</b>	<b>03003-48</b>	<b>03003-50</b>
3RU X 2 FANS	<b>03003-03</b>	<b>03004-02</b>	<b>03003-47</b>	<b>03003-51</b>
6RU X 4 FANS	<b>03003-04</b>	<b>03004-03</b>	<b>03003-49</b>	<b>03003-52</b>



### GRILLE TRIM ASSEMBLY

Mounts at the base of the Type A and S2005 Cabinets, the trim is fitted using push/pull locking clips, which allows easy removal for changing filters where fitted.

TYPE	CODE
19"	<b>03038-01</b>
650	<b>03038-02</b>
S2005, 600	<b>06013-01</b>
S2005, 700	<b>06013-03</b>
S2005, 8000	<b>06013-01</b>

## AIR CONDITIONERS



w e g w e i s e n d i n n o v a t i v

**MFB Products has partnered with Seifert Systems to offer its range of Thermal management products. Including indoor and outdoor enclosure cooling systems, Peltier thermoelectric coolers, heat exchangers, fans, heaters and thermal controls.**

The entire Seifert industrial product line is cURus, CE and RoHS approved.

#### Cabinet applications

The S280 Industrial range of cabinets are designed to accommodate the full range of Seifert air conditioners. Mounting options include, side, top and door mount. When Seifert air conditioners are ordered with MFB cabinets, mounting apertures are considered during the manufacturing phase - ensuring precision fitting. The Seifert range is designed for indoor and outdoor applications. They are rated from IP54 to IP56, The Peltier Thermoelectric Coolers are rated at IP66. Seifert air conditioners are available in Mild Steel powder coat RAL7035 and Stainless Steel (304 and 316)



#### SLIMLINE PRO

##### The easiest way of installing a cooling unit.

The innovative one man mounting systems from Seifert allows a screw less installation with no need of additional fixing material.

Depending on the size of the unit the mounting time can be reduced to less than 2 minutes. Simplified cutouts without the need of drilling holes into the enclosure add to the ease the mounting even further.

Available in a mild steel finished in RAL7035 - or stainless steel - all models have an integrated condenser evaporation system, an electronic controller with colour display, a temperature range from -40°C to +60°C and an ingress protection class of IP 56. They also comply with NEMA type 3, 3R, 12, 4 and 4X.

SlimLine Pro cooling units are suitable for indoor and outdoor use, with cooling capacities from 300 W to 6 kW they cover a big range of applications.



## SLIMLINE

### Filter less cabinet cooling

The optimized wide-ribbed aluminium condenser provides improved cooling performance and ensures reliability in industrial operations. High quality components form the basis for the smooth running and long working life of the SlimLine air conditioners.

Roof mount and 19" internal rack mount units is also available.

The units can be externally or internally mounted and are only 110mm deep and therefore currently the slimmest air conditioners on the market. As only small apertures need to be cut for mounting, the cabinet doors remain stable.

All SlimLine indoor air conditioners meet the latest European standards and are cURus certified.



## SOLITHERM OUTDOOR

### Streamlined design - quicker manufacturing time

Standardizing components, versions and sizes across the range, diminishing the need for large spare parts holdings.

Ensure proper installation. Use the installation kit provided including the self adhesive gasket.

Ensure the enclosure is sealed to a minimum IP56. This level of ingress protection will ensure the a/c unit runs at optimum performance, the compressor is working correctly and the condensation is at a minimum.

Mild Steel finish RAL choice of colours, RAL7035 as standard. IP56. Up to Nema4x Stainless Steel available - 304 and 316

Electric Condensate Evaporator available for 2kW units and up.

Electronic controller display on the enclosure side of unit. The display indicates temperature and operating status and can be easily set and adjusted by the user via user interface

Filters are available for excessively dusty dirty, greasy environments.



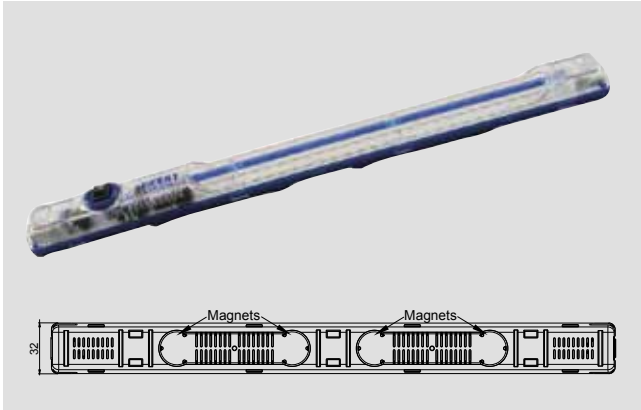
## PELTIER

### Efficient cooling with Peltier technology.

The thermoelectric elements create a temperature difference between the internal and ambient heat sinks, making internal air cooler while dissipating heat into the external environment. Fans help the transfer of convective heat from the heat sinks, which are optimized for maximum flow. These air conditioners come in powder-coated sheet steel or stainless steel housings according to customer's requirements. They can be mounted in any position because these units don't have a compressor and no moving parts. Depending on the mounting situation the condensation management may need to be considered and possibly adjusted.

Seifert Peltier air conditioners are resistant to extreme ambient conditions and can operate effectively even in environments which are dusty and oily and where temperatures may vary from -20°C to +65°C. They comply with European standards IEC/TC 62610-1 and IEC/TC 62610-3, and can be used for both indoor and outdoor applications. The ingress protection rating is IP 66. Seifert offer most of their Peltier units with AC or DC voltage.

**LIGHTING**



**SEIFERT STRIPLITE LED**

The new striplite LED light fixture is the economical and space saving solution for cabinet and enclosure lighting. The state of the art LED technology ensures a long and maintenance free life cycle.

The main features are:

- Combined AC & DC voltage range allows the universal use with a single model
- Motion sensor or ON/OFF switch available
- Various fitting options for more flexibility
- Daisy chain cables allow to connect up to 16 lights with AC and up to 8 lights with DC voltage
- Wieland or push fit connector for fast and easy installation

**KVM SWITCH & RACKMOUNT TECHNOLOGY**



**MFB are a distributor of an extensive range of KVM switches, LCD Monitors and Rack Mount Technology. This reliable and versatile range provides a solution for each application.**

**KVM DRAWER**

The keyboards are available in standard notebook or cherry style and can be fitted with touchpads or a trackball. There are 1RU and 2RU versions available with options for fixed and pull out screens with or without 8 port or 16 port KVM switches at the rear.



**KVM BOXES**

KVM boxes are available in 8,16 and 32 port configurations, utilising D-sub 15 or Cat5e inputs.

The units support both USB & PS2 connections. The design allows you to upgrade from a single port console to a multiple port.



**FLAT PANEL & TOUCH SCREEN**

Available in 8RU/17" Touchscreen and 19" Rack mount monitor. Perfect for 19" racks, cabinets or consoles where touchscreen ability is required.

Includes On Screen Display for LCD, front handles for Quick installation is achievable with the standard 19" rack mounting and supplied with DVI, D Sub (SVGA) and USB interface options.

**E-RACK - RACK DOOR CONTROL**



**RACK DOOR CONTROL**

The E-Rack Door locking solution is ideal for racks in Data Centres , Remote locations or Multiple Sites offering maximum security & user control. The POE (Power Over Ethernet) driven solution can be managed from your NOC, Office or where ever you have internet connections. This World Class solution allows for complete access control to your racks & enclosures. Know who is entering any rack at any time.

Fast , effective & easy installation ensures total protection of all rack content ensuring no unauthorised access and logs of all events by operations.

**Features**

- Remotely monitored and controlled over the network using standard web browse
- Inbuilt management software
- Single source for access permissions
- SNMP & email notifications
- Key override in the event of network failure
- A system that is easy to install & use
- Cost effective integration & fault tolerance
- Easy to retro fit into existing enclosures
- Flexibility to meet changing data centre needs
- Optional integration into DCIM , graphic representation with drag-and-drop device legend for current equipment status

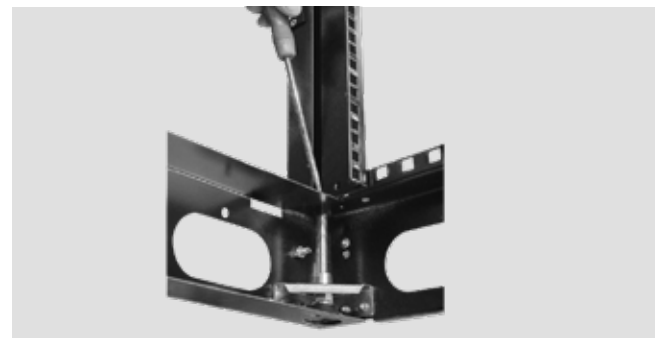
**PLINTH & BASE**



**CASTOR RAILS**

Adds 30mm to the overall height of the rack. Suits all Type A and S2005 racks. Levelling feet can be specified to use with these rails. Brakes can be supplied however they must be activated from within the rack. For all 700 and 800mm wide S2005 racks the rails to mount the castors are already included. Max Load 200kg.

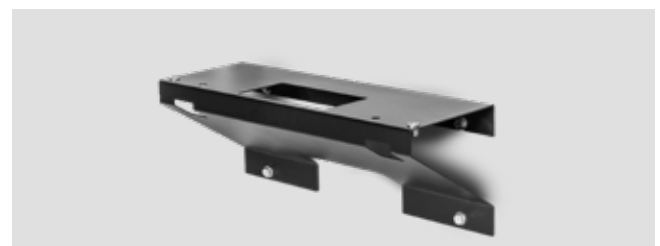
TYPE	CODE
19" Frame 1 Pair	<b>03057-01</b>
Reduced Frame (Set)	<b>06012-05</b>
Brake Assembly (Pair) to suit Castor Rail	<b>03046-02</b>



**LEVELLING FEET**

Can be fitted to all larger cabinets.

TYPE	CODE
Type A & B (1 Set)	<b>03024-03</b>
S2005 Series (1 Set)	<b>03024-05</b>



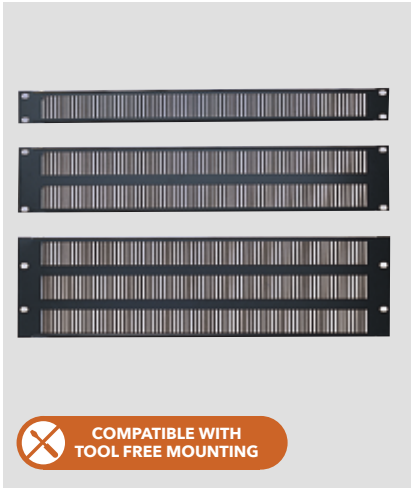
**WALL MOUNT KIT**

Under cabinet support kit

600 WIDE	800 WIDE
<b>02082-60</b>	<b>02082-61</b>



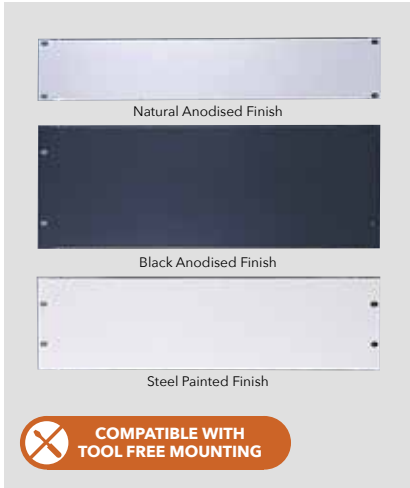
**PANELS**



**VENT PANELS  
(WITH SNAP IN STUDS)**

All panels are intended to be used between heat generating equipment to assist air flow. Standard colour is black, however other colours can be specified.

RU	19" CODE
1	<b>03309-01</b>
2	<b>03309-02</b>
3	<b>03309-03</b>
4	<b>03309-04</b>
5	<b>03309-05</b>
6	<b>03309-06</b>



**BLANK PANELS**

Blank panels are stocked in steel for painted finish and in Aluminium for natural and blank anodise finish. Stock sizes are from 1RU through to 12RU. All styles suit tool free mounting. Sizes larger than 12RU can be made to order.

RU	STEEL 19"	NATURAL ANODISED	BLACK ANODISED
1	<b>03307-01</b>	<b>03307-13</b>	<b>03307-25</b>
2	<b>03307-02</b>	<b>03307-14</b>	<b>03307-26</b>
3	<b>03307-03</b>	<b>03307-15</b>	<b>03307-27</b>
4	<b>03307-04</b>	<b>03307-16</b>	<b>03307-28</b>
5	<b>03307-05</b>	<b>03307-17</b>	<b>03307-29</b>
6	<b>03307-06</b>	<b>03307-18</b>	<b>03307-30</b>
7	<b>03307-07</b>	<b>03307-19</b>	<b>03307-31</b>
8	<b>03307-08</b>	<b>03307-20</b>	<b>03307-32</b>
9	<b>03307-09</b>	<b>03307-21</b>	<b>03307-33</b>
10	<b>03307-10</b>	<b>03307-22</b>	<b>03307-34</b>
11	<b>03307-11</b>	<b>03307-23</b>	<b>03307-35</b>
12	<b>03307-12</b>	<b>03307-24</b>	<b>03307-36</b>



**EZIBLANK PANELS 19" 6RU**

EZIBLANK® 6-RU Blanking Panel is a well received innovative Australian data centre product that is made of the highest quality of flame retardant (UL94 V0) ABS plastic. Moulded with precisely engineered clips, EZIBLANK® Blanking Panel can be installed easily onto square mounting holes of any EIA-310-D compliant 19" server rack to prevent recirculation of hot exhaust air within server racks.

The snappable feature of the EZIBLANK® 6RU Blanking Panels makes it the perfect server rack accessory for data centre operators where separated panels can be installed and reused onto different RU heights of unused space.

**Specifications**

Material	Impact resistant, water resistant, anti-static ABS plastic
Colour	Black
Standards	EIA-310-D
Environmental	RoHS Compliant
Toxicity	Non toxic and resistant to chemicals
Flammability	UL-94 VO rated, Flame retardant ABS plastic
Recyclability	100% recyclable and reusable

**Shipping (pack of 10)**

Weight	3.5kg
Dimensions	520L x 390W x 80H

**CODE**  
**02710-01**

**MISCELLANEOUS**



**INTERNAL FRAME SWING ASSEMBLIES**

This swing frame assembly has been adapted to allow it to be used in Type 'A', S2005, S280 Industrial and RFI 19" cabinets.

The design of the swing frame requires the usable rack area to be reduced by 3-rack units.

When using 18RU, 27RU, 39RU or 45RU cabinets, the maximum height swing frame assembly for the cabinet is 15RU, 24RU, 36RU and 42RU respectively.

The swing frame assembly is most useful for rear mounting patch panels behind front mounted equipment whilst still allowing access to the equipment rear. They can also be mounted directly on to a wall typically in a riser cupboard. Areas of confined space that require rear access is another popular application.

RU	MOUNTING ANGLES	STIFFENERS
4	<b>03017-01</b>	<b>03017-50</b>
10	<b>03017-02</b>	<b>03017-51</b>
15 (18)	<b>03017-03</b>	<b>03017-52</b>
24 (27)	<b>03017-04</b>	<b>03017-53</b>
36 (39)	<b>03017-05</b>	<b>03017-54</b>
42 (45)	<b>03017-06</b>	<b>03017-55</b>

**CABINET FRONT STABILISERS**

Designed to suit S2005 range of cabinets. These add to the stability of the cabinet when heavy slide mounted equipment is fully extended out; file servers are typical of this equipment. The stabilisers may be pivoted back flush with the cabinet front when they are not required. This is an important safety feature as fixed stabilisers-present a significant pedestrian-traffic hazard. A panel printed with a warning regarding the use of-Front Stabilisers is available and recommended.

WIDTH	CODE
600	<b>06022-01</b>
700	<b>06022-03</b>
800	<b>06022-02</b>



**LIFTING SPREADER BARS**

Designed for use with all MFB standard sized cabinets. Used in conjunction with eye bolts mounted in the cabinet top, this bar assembly eliminates side loading on the eye-bolts.

CODE
<b>03302-01</b>

**MISCELLANEOUS**



**DOCUMENT POCKET**

Suitable for fitting to the inside face of doors, side panels etc, accepts up to A4 size. Attachment is by double sided foam tape.

CODE
<b>12135-01</b>



**CAGE NUT ASSEMBLY**

Comprises M6 cage nut, a nylon washer and an M6 x 16 pan head cross recess screw with a black finish.

TYPE	CODE
Bag of 50	<b>03025-04</b>



**RACKSTUDS™**

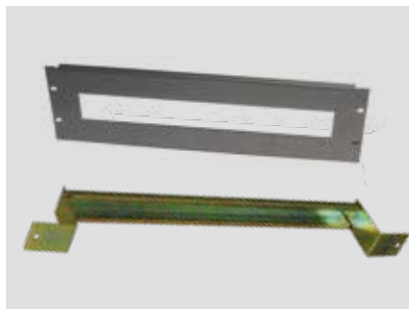
Rackstuds™ are the revolutionary replacement for the cage nut used to mount IT, Pro A/V, Security, Telecommunications in 19" racks.

TYPE	CODE
Bag of 100	<b>31030-09</b>



**RU PRINTED MTG ANGLES**

RU	TYPE A	TYPE C
12	<b>02015-01</b>	<b>02015-10</b>
18	<b>02015-02</b>	<b>02015-11</b>
27	<b>02015-03</b>	<b>02015-12</b>
33	<b>02015-04</b>	<b>02015-13</b>
39	<b>02015-05</b>	<b>02015-14</b>
45	<b>02015-06</b>	<b>02015-15</b>



**DIN RAIL AND FRONT PANEL**

Designed to accept DIN rail mounting components like circuit breakers, earth bars etc. The DIN rail and front panel are black. The panel cut-outs will accept various blanking plates to infill between components and can be customised to suit individual applications.

TYPE	CODE
3RU Front Panel 19"	<b>12055-01</b>
DIN Rail	<b>12054-01</b>



**LCD MONITOR MOUNT PANEL 19"**

This 3RU Panel is designed to assist with the mounting of flat screens within a cabinet. The panel mounts across the mounting angles and comes with VESA 75mm and VESA 100mm mounting detail. Made from 2.0mm steel and finished in powder coated black.

CODE
<b>12111-01</b>



**LIFTING EYE BOLT**

Forged steel and come with an M10 thread and a galvanised plated finish. These certified 250kg each load capacity eye bolts should be specified at time of ordering and for safe lifting, spreader bars should always be used.

Refer to General Notes on inside back cover.

TYPE (SET OF 4)	CODE
Vented Top	<b>03033-02</b>
Plain/Grille Top	<b>03033-03</b>