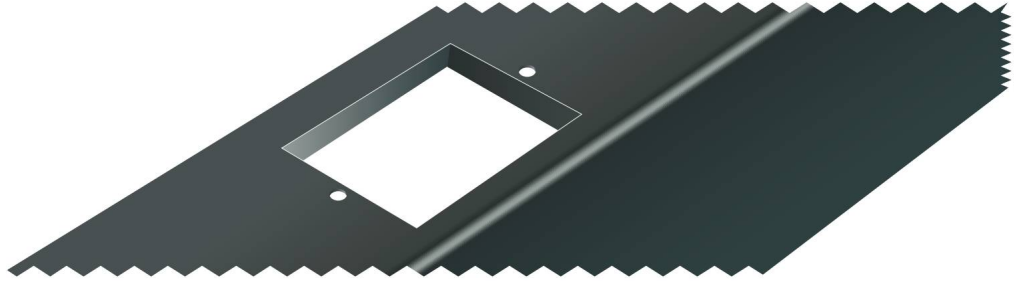


Steel Channel Rack 1

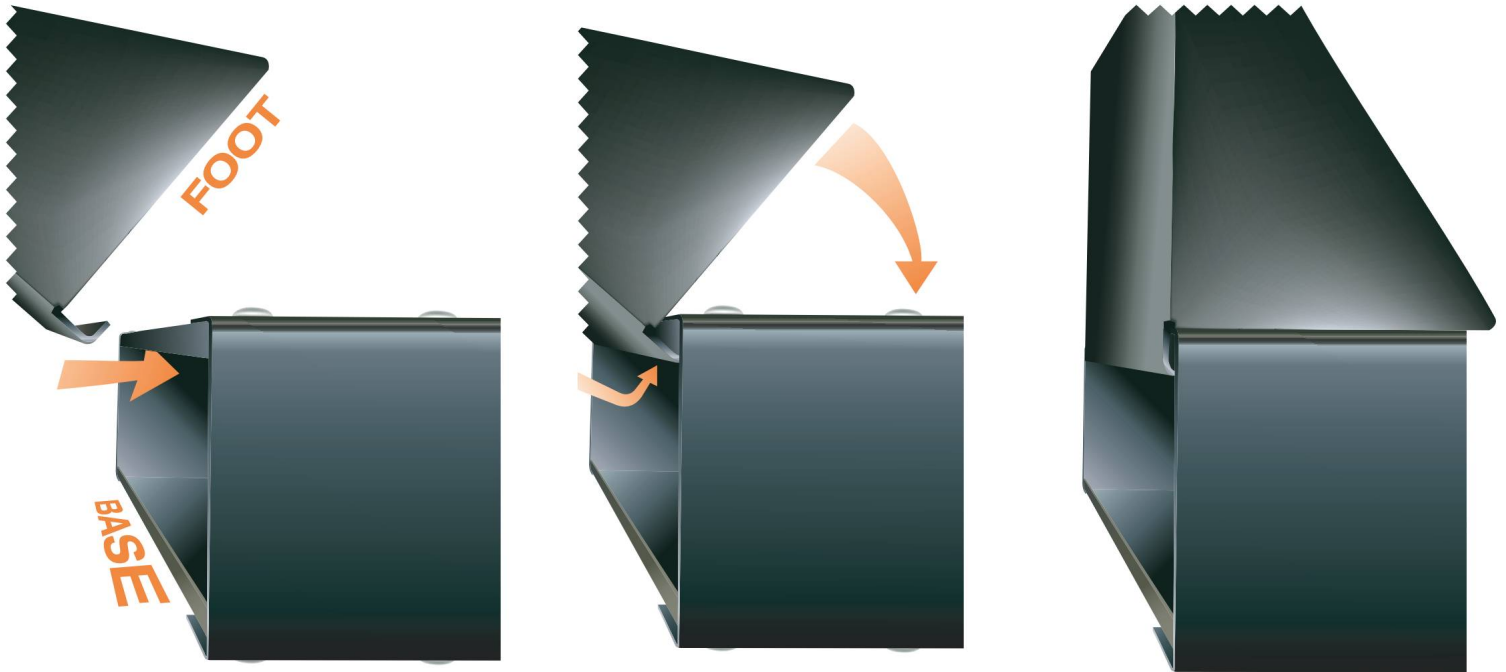
STEP 1

ENSURE THAT CABLE ENTRY HOLE IN THE BASE IS FACING UPWARDS. THIS IS THE FRONT OF YOUR RACK.



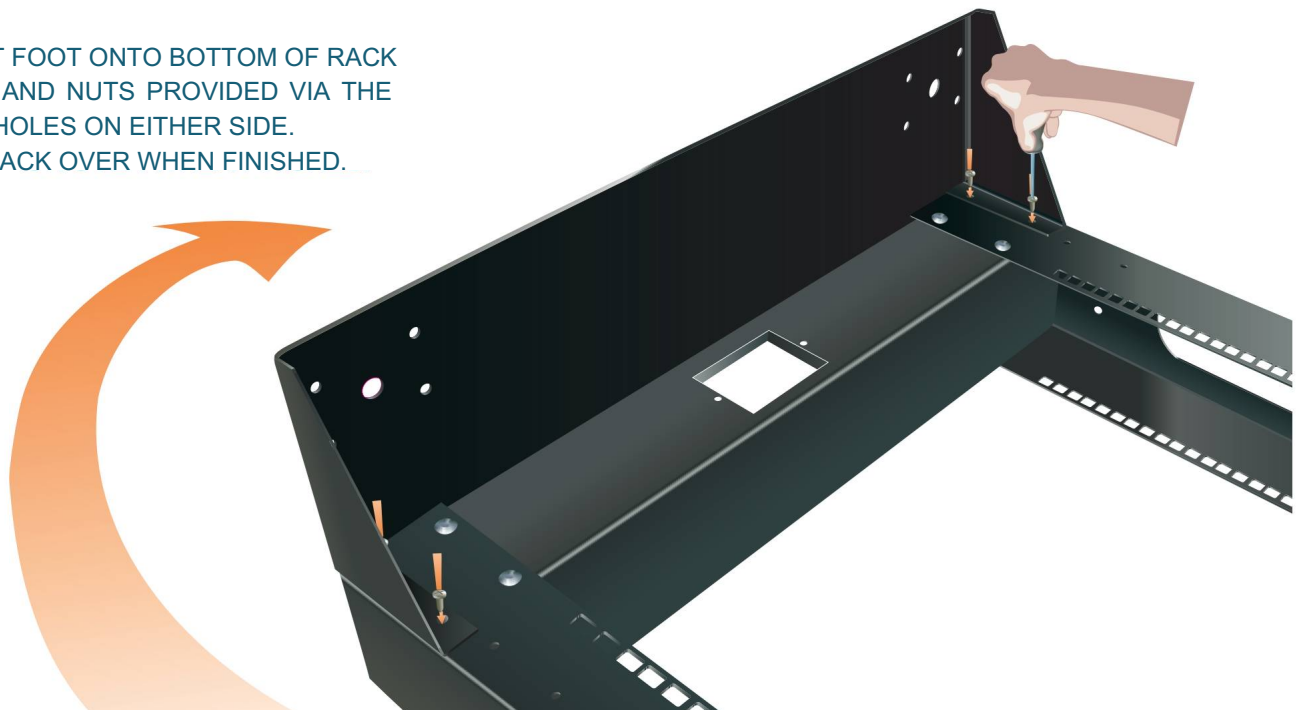
STEP 2

HOOK FRONT FOOT SUPPORT INTO BASE AS SHOWN AND PIVOT INTO PLACE. (THIS IS THE SMALLER FOOT IF USING THE 600mm DEEP BASE OPTION)



STEP 3

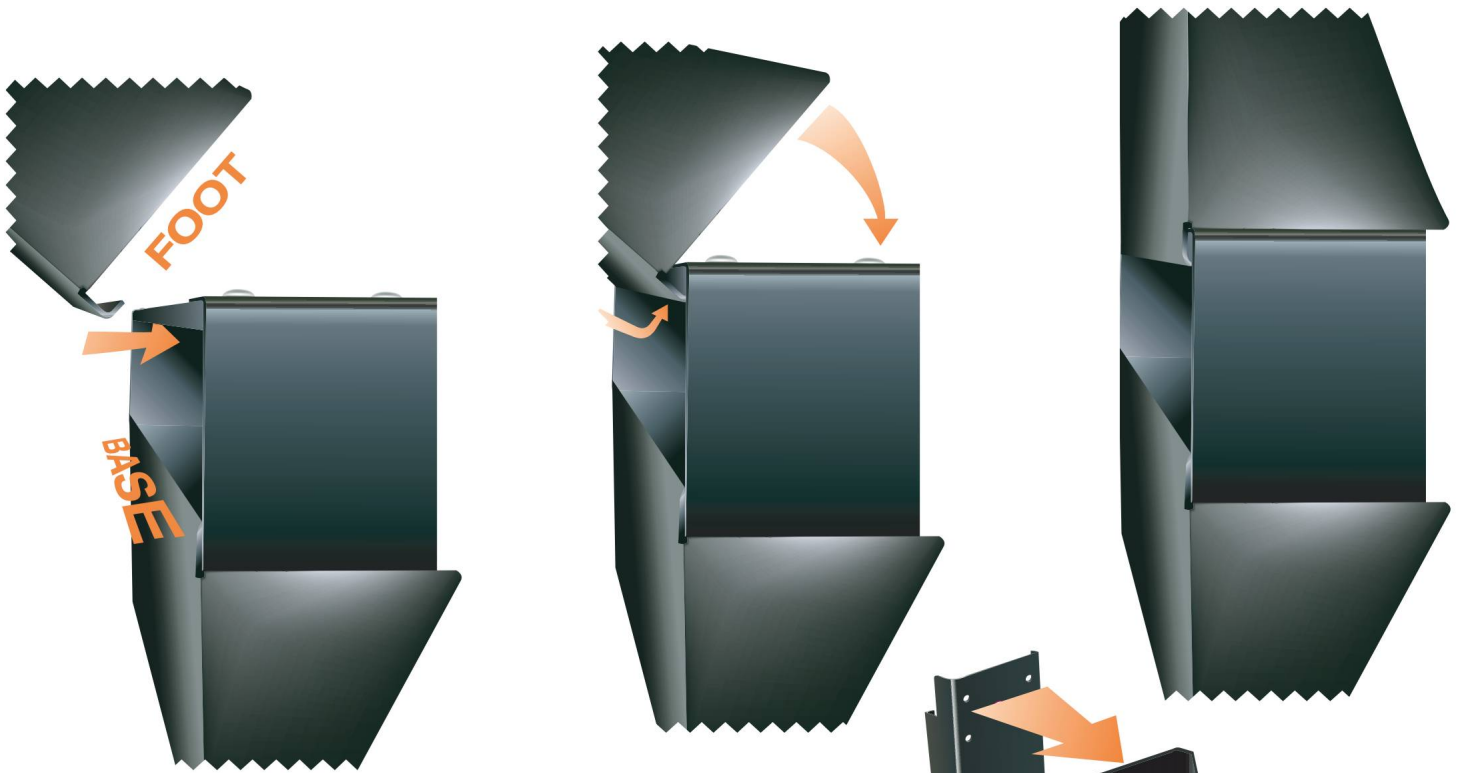
SECURE FRONT FOOT ONTO BOTTOM OF RACK WITH SCREWS AND NUTS PROVIDED VIA THE OUTSIDE TWO HOLES ON EITHER SIDE. TURN ENTIRE RACK OVER WHEN FINISHED.



Steel Channel Rack 2

STEP 4

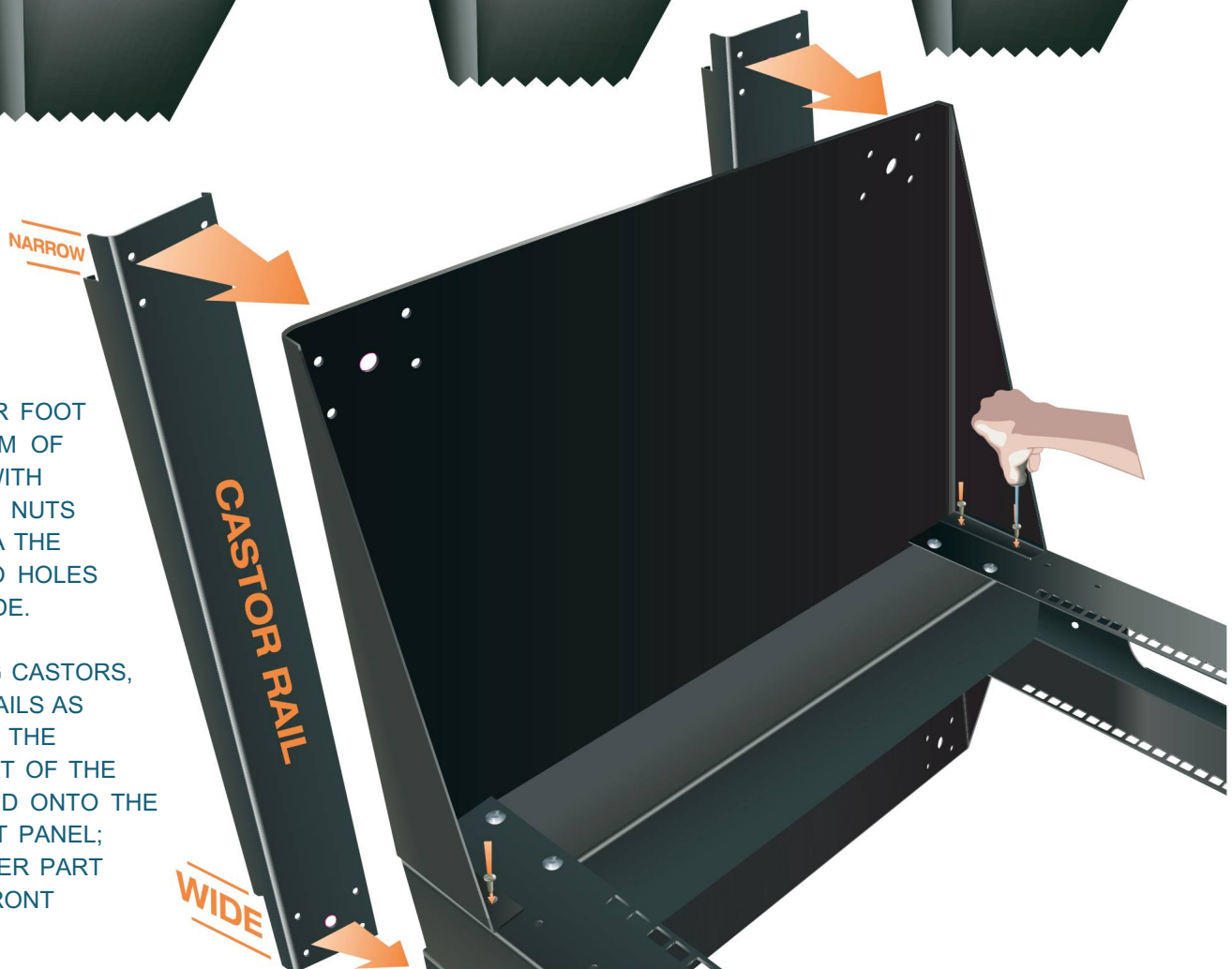
TURN RACK SO THAT CABLE ENTRY HOLE IN THE BASE IS FACING DOWNWARDS. THIS IS THE REAR OF YOUR RACK.
HOOK REAR FOOT SUPPORT INTO BASE AS SHOWN AND PIVOT INTO PLACE.



STEP 5

SECURE REAR FOOT ONTO BOTTOM OF RACK WITH WITH SCREWS AND NUTS PROVIDED VIA THE OUTSIDE TWO HOLES ON EITHER SIDE.

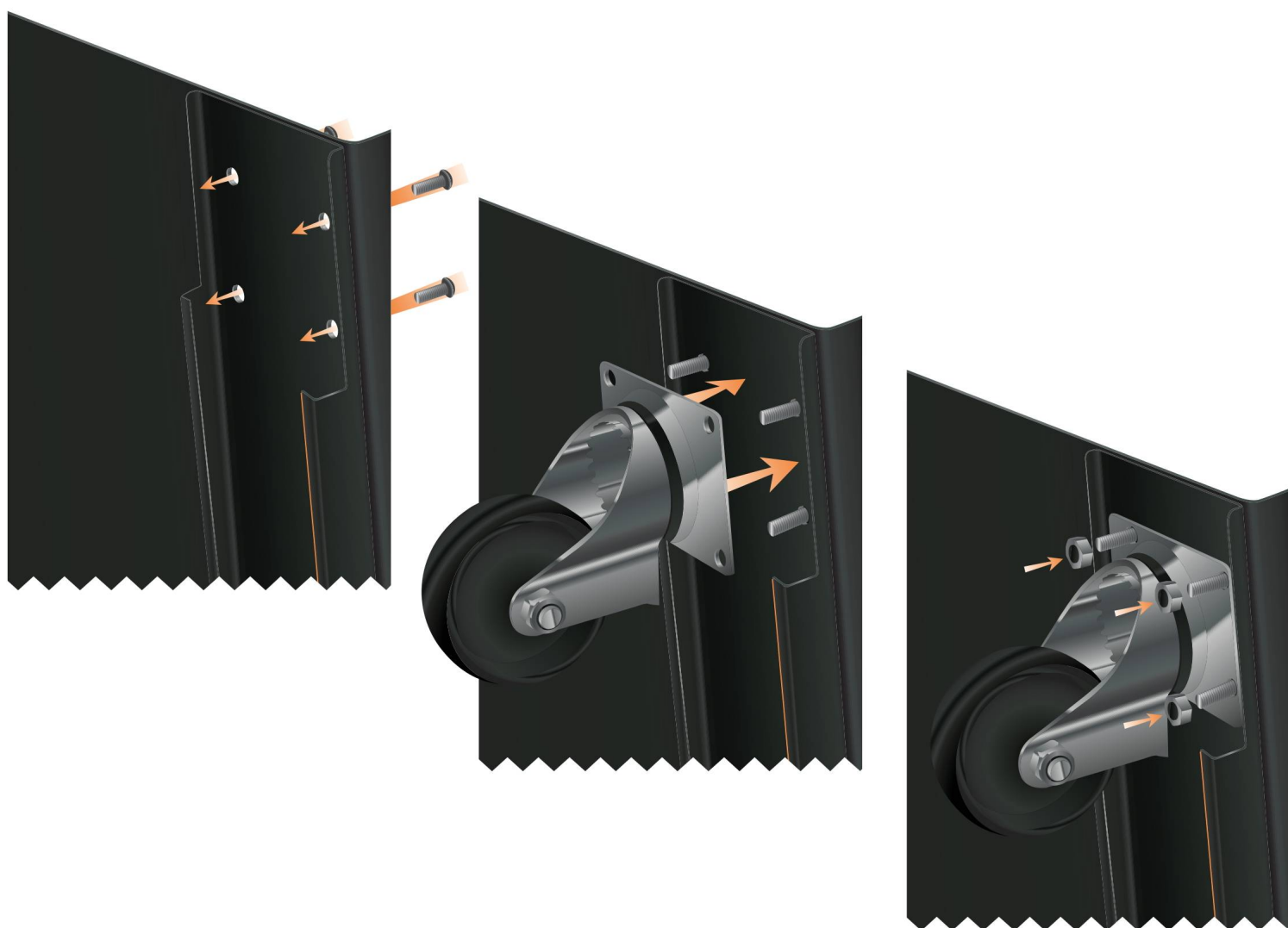
IF ATTACHING CASTORS, PLEASE FIT RAILS AS SHOWN WITH THE NARROW PART OF THE RAIL MOUNTED ONTO THE LARGER FOOT PANEL; AND THE WIDER PART ONTO THE FRONT FOOT PANEL.



Steel Channel Rack 3

STEP 6

SELECTING THE TWO CASTORS WITHOUT BRAKES, MOUNT THEM AS SHOWN TO THE NARROW END OF THE CASTOR RAILS. IF YOU HAVENT MOVED YOUR RACK SINCE ATTACHING THE FOOT PANELS, THIS SHOULD BE AT THE TOR



STEP 7

REPEAT THE LAST STEP, ATTACHING THE CASTORS WITH BRAKES TO THE FRONT PART OF THE CASTOR RAILS, WITH SCREWS AND NUTS PROVIDED.